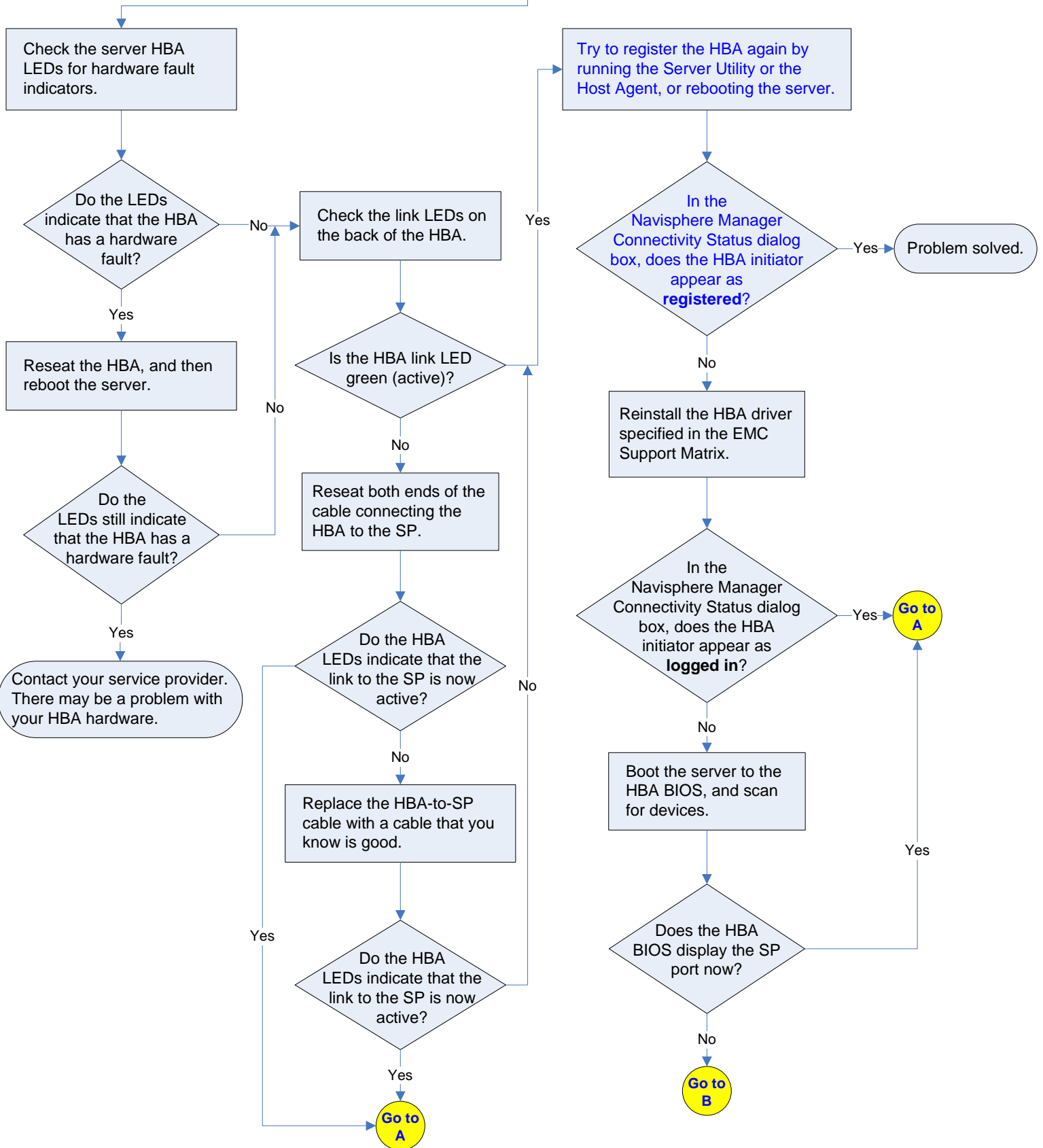


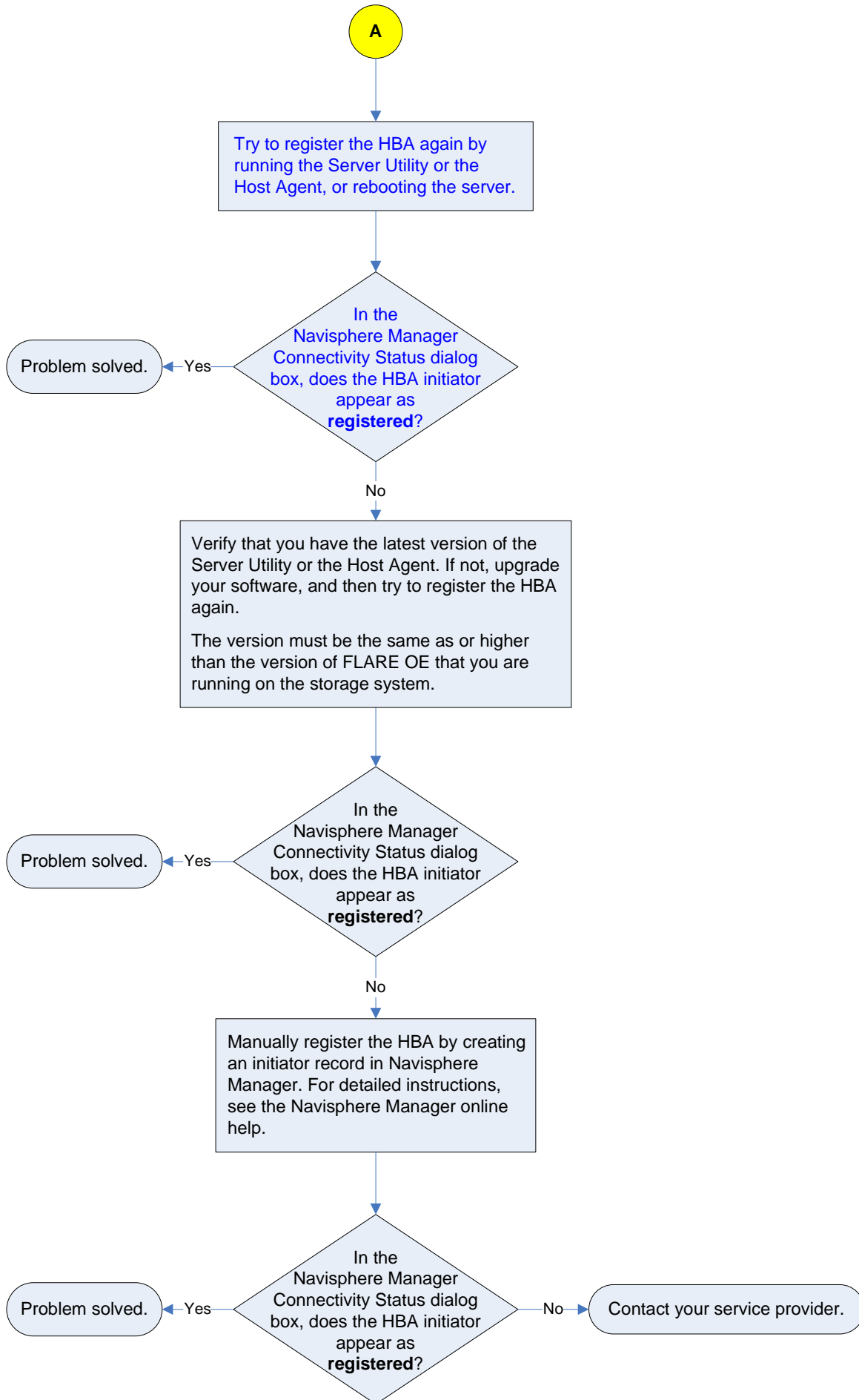
An HBA Is Not Registered (Direct Attach)

Symptoms:

- Navisphere Manager displays **No** in the **Registered** column next to the HBA in the Connectivity Status dialog box.
- The Navisphere Server Utility displays an error message stating that the registration did not occur.



An HBA Is Not Registered (Direct Attach) (continued)



An HBA Is Not Registered (Direct Attach) (continued)

